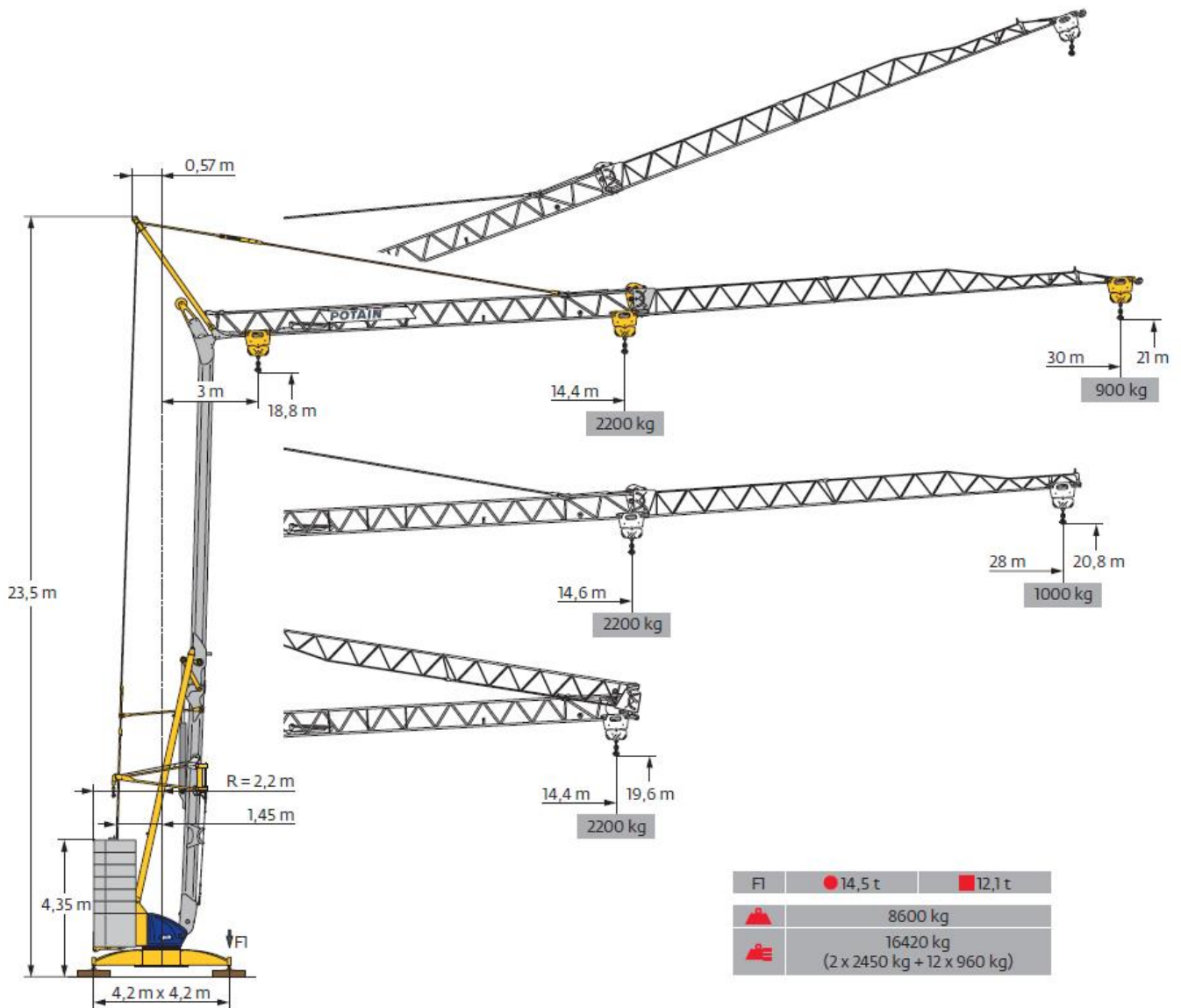


Igo 30

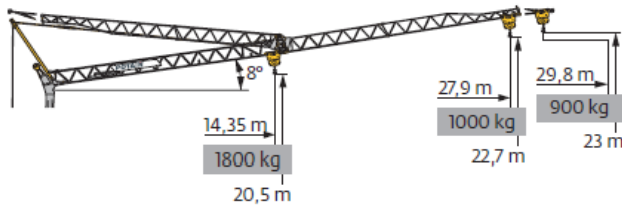


Courbes de charges / Lastkurven / Load curves / Curvas de cargas / Curve di carico
 Curvas de carga / Кривые нагрузок

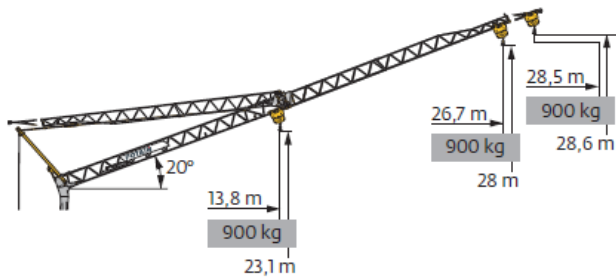


| | | | | |
|------|---|---|------|----|
| 30 m | 3 | ▶ | 14,4 | m |
| | | | 2200 | kg |
| 28 m | 3 | ▶ | 14,4 | m |
| | | | 2200 | kg |

| | | | | | | | | | | | | | | | | | | | |
|---|---|------|------|------|------|------|------|------|------|------|------|------|------|------|------|------|-----|-----|----|
| 3 | ▶ | 14,4 | 15 | 16 | 17 | 18 | 19 | 20 | 21 | 22 | 23 | 24 | 25 | 26 | 27 | 28 | 29 | 30 | m |
| | | 2200 | 2095 | 1935 | 1800 | 1680 | 1570 | 1480 | 1395 | 1315 | 1245 | 1185 | 1125 | 1075 | 1025 | 980 | 940 | 900 | kg |
| 3 | ▶ | 14,6 | 15 | 16 | 17 | 18 | 19 | 20 | 21 | 22 | 23 | 24 | 25 | 26 | 27 | 28 | m | | |
| | | 2200 | 2135 | 1975 | 1835 | 1710 | 1600 | 1505 | 1420 | 1340 | 1270 | 1205 | 1150 | 1095 | 1045 | 1000 | kg | | |









| | | | | | | | | | | | | | | | | | | |
|------|---|---|------|------|------|------|------|------|------|------|------|------|------|------|-----|-----|------|----|
| 30 m | 3 | ▶ | 16,9 | 17 | 18 | 19 | 20 | 21 | 22 | 23 | 24 | 25 | 26 | 27 | 28 | 29 | 29,8 | m |
| | | | 1800 | 1785 | 1665 | 1560 | 1465 | 1380 | 1305 | 1235 | 1175 | 1120 | 1065 | 1015 | 970 | 930 | 900 | kg |
| 28 m | 3 | ▶ | 17,2 | 18 | 19 | 20 | 21 | 22 | 23 | 24 | 25 | 26 | 27 | 27,9 | m | | | |
| | | | 1800 | 1705 | 1595 | 1500 | 1415 | 1335 | 1265 | 1200 | 1145 | 1090 | 1040 | 1000 | kg | | | |



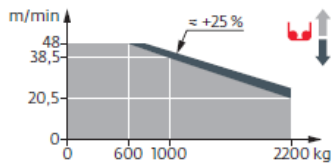
| | | | | |
|------|---|---|------|----|
| 30 m | 3 | ▶ | 28,5 | m |
| | | | 900 | kg |
| 28 m | 3 | ▶ | 26,7 | m |
| | | | 900 | kg |

Mécanismes / Triebwerke / Mechanisms / Mecanismos / Meccanismi
 Mecanismos / Механизмы

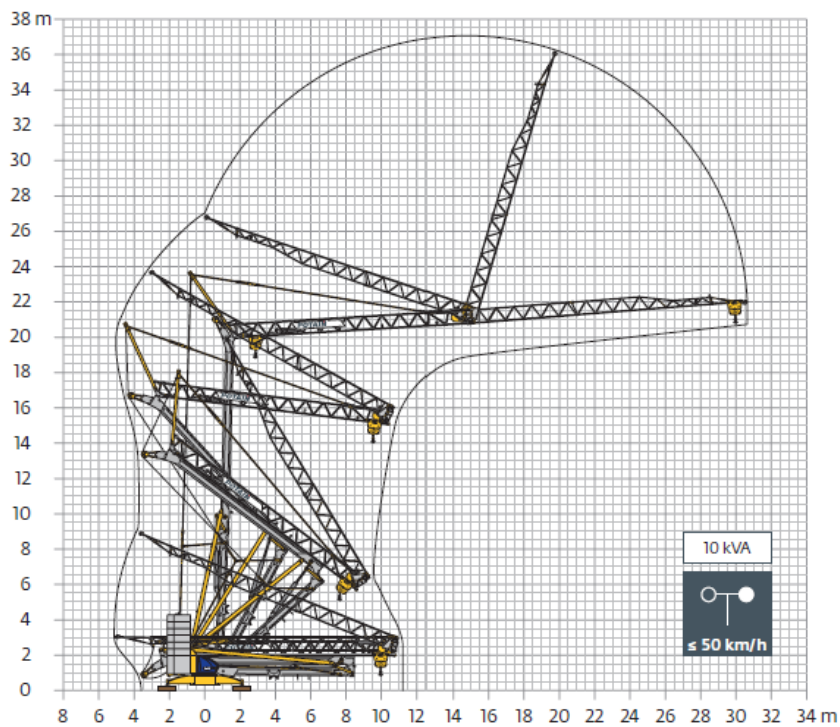
| 400 V - 50 Hz 480 V - 60 Hz | |  | | | | | ch - PS hp | kW | |
|-----------------------------------------------------------------------------------|---------------------|-----------------------------------------------------------------------------------|-----------------------------|------|------|------|---------------|----|-----|
|  | 10 LVF 11 Optima | m/min | 2,5 | 12 | 20,5 | 38,5 | 48 | 10 | 7,5 |
| | | kg | 2200 | 2200 | 2200 | 1000 | 600 | | |
|  | 2 DVF 4 | m/min | 15 - 30 (900 → 2200 kg) | | | | | 2 | 1,5 |
| | | | 15 - 30 - 40 (100 → 900 kg) | | | | | | |
| | | | 15 - 30 - 47 (0 → 100 kg) | | | | | | |
|  | RVF 31 Optima+ | tr/min | 0 → 0,8 | | | | | 2 | 1,5 |
| | | U/min | | | | | | | |
| | | rpm | | | | | | | |

|  IEC 60204-32 |  kVA |
|------------------------------------------------------------------------------------------------|-----------------------------------------------------------------------------------------|
| 400 V (+10% -10%) 50 Hz / 480 V (+6% -10%) 60 Hz | 10 kVA |

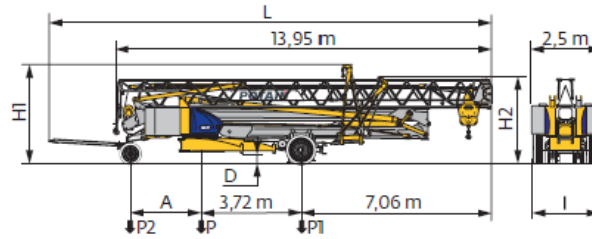
10 LVF 11 Optima



Montage / Montage / Erection / Montaje / Montaggio
 Montagem / Монтаж

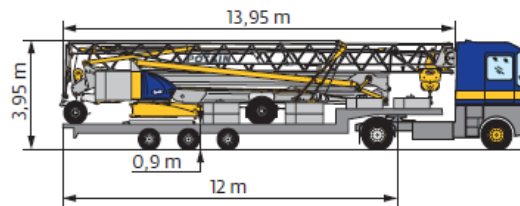


Transport / Transport / Transport / Transporte / Trasporto
Transporte / Транспортировка



| | km/h | A (m) | D (m) | H1 (m) | H2 (m) | L (m) | I (m) | P (kg) | P1 (kg) | P2 (kg) |
|------------|------|-------|-----------|-----------|----------|-------|-------|--------|---------|---------|
| DS62/S81 | 10 | 2,55 | 0,36/0,21 | 3,66/3,51 | 3,2/3,05 | 15,8 | 2,2 | 14080 | 8260 | 5820 |
| DJ100/S125 | 25 | 2,65 | 0,38/0,23 | 3,66/3,51 | 3,2/3,05 | 16,39 | 2,4 | 15600 | 9300 | 6300 |

..... / **i**



| | FR | DE | EN | ES | IT | PT | RU |
|-----------|-------------------------------------------------------------------------------------------|-------------------------------------------------------------------------------------------|-------------------------------------------------------------------------------------------------|----------------------------------------------------------------------------------|-----------------------------------------------------------------------------------------------|----------------------------------------------------------------------------------------|----------------------------------------------------------------------------------------------------------------|
| R | Rayon de giration | Schwenk radius | Rear slewing radius | Radio de giro | Raggio di rotazione | Ralo de rotação | Задний габарит |
| i | Nous consulter | Auf Anfrage | Consult us | Consultarnos | Consultateci | Consultar-nos | Проконсультируйтесь у нас |
| ● | Réactions en service | Reaktionskräfte in Betrieb | Reactions in service | Reacciones en servicio | Reazioni in servizio | Reacções em serviço | Реакция при работе |
| ■ | Réactions hors service | Reaktionskräfte außer Betrieb | Reactions out of service | Reacciones fuera de servicio | Reazioni fuori servizio | Reacções fora de serviço | Реакция в покое |
| ▲ | Poids à vide, sans lest, sans trains de transport, avec flèche maxi. et hauteur standard. | Gewicht ohne Last, ohne Ballast, ohne Transportachsen, mit max. Auslager und Standardhöhe | Weight without load, without ballast, without transport axes, with max. jib and standard height | Peso en vacío, sin lastre, sin trenes de transporte con flecha y altura estandar | Peso a vuoto, senza zavorra, senza assali di trasporto, con braccio max e altezza a standard. | Peso em vazio, sem lastro, sem eixos de transporte com lança máxima e altura standard. | Вес без груза, без балласта, без осей для транспортировки, с максимальным вылетом стрелы и стандартной высотой |
| ■ | Poids total du lest | Ballast-Gesamtgewicht | Total ballast weight | Peso total del lastre | Peso totale della zavorra | Peso total do lastro | Общий вес балласта |
| □ | Équipements standards | Standardausrüstungen | Standard equipment | Equipamiento de serie | Equipaggiamento standard | Equipamento de série | Стандартное оборудование |
| ○ | Équipements optionnels | Sonderausrüstungen | Options | Equipamiento opcional | Equipaggiamento in opzione | Equipamento opcional | Дополнительное оборудование (опция) |
| ● | Levage | Heben | Hoisting | Elevación | Sollevamento | Elevação | Подъем |
| ■ | Distribution | Katzfahren | Trolleying | Distribución | Distribuzione | Distribuição | Перемещение по стреле |
| ● | Orientation | Schwenken | Slewing | Orientación | Rotazione | Rotação | Поворот |
| VA | Puissance requise | Erforderliche Leistung | Required power | Potencia Necesaria | Potenza richiesta | Potência Necessária | Потребляемая мощность |
| ⚠ | Hauteurs sous crochet données moufle plaquée | Hakenhöhen werden mit plattiertem Haken angegeben | Hook heights given with plated pulley block | Altura bajo gancho con pasteca bloqueada | Altezza sotto gancho con bozzello in contatto con carrello | Altura ao gancho com o cadernal em contacto com o carrinho | высота под крюком дана при условии, что крюковая подвеска соприкасается с кареткой |
| | Document commercial non contractuel | Unverbindliches Vertriebsdokument | This commercial document is not legally binding | Documento comercial no contractual | Documento commerciale non vincolante | Documento comercial não contratual | Этот коммерческий документ не является юридически обязательным |
| | Pour toute information technique se référer à la notice correspondante | Für technische Informationen, siehe die entsprechenden Anweisungen | For any technical information, please refer to the corresponding instructions | Para cualquier información técnica, ver la noticia correspondiente | Per tutte le informazioni tecniche fare riferimento al catalogo istruzioni | Para qualquer informação técnica complementar consultar as respectivas instruções | Для получения технической информации, см. соответствующие инструкции |

