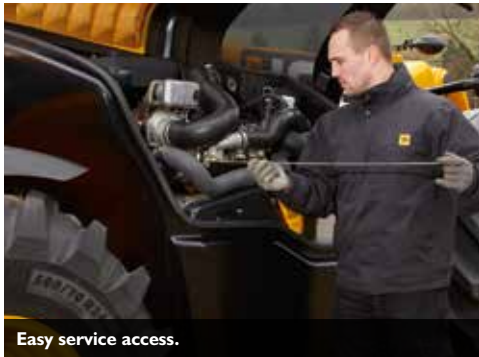




**TELESCOPIC HANDLER | RANGE**





Easy service access.



Slam shut top door.



Fast and precise control with single lever servo control and proportional auxiliaries.



Our two-stage boom is designed for great lift and reach.



Huge choice of attachments.

		531-70	541-70
Maximum lift height	m	7	7
Maximum lift capacity	kg	3100	4100
Maximum forward reach	m	3.7	3.7
Lift capacity at full reach	kg	1250	1250
Overall height	m	2.49	2.49
Overall width over tyres	m	2.23	2.23
Overall length to front carriage	m	4.99	4.99
Engine (gross)	hp (kW)	85 (63) standard 74.2 & 97kW options	85 (63) standard 74.2 & 97kW options