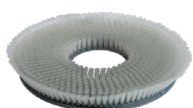


Wet shampooing



21310 Shampoo brush



21176 Water tank 14 L



20051 Monomatic LS












14100 Shampoo 10 L container





Description

Definition / objective	Removing deep-seated and stubborn dirt from the surface of floor coverings using the LS single-brush machine, the shampoo brush and the brush vacuum cleaner. Suitable for water-resistant, textile floor coverings and carpets.	
Preparatory work		Select suitable products to match the surface to be cleaned (type / square metres) and the type of soiling.
		Check whether the entire floor covering is suitable for this cleaning method.
		Check, equip and ready the machine and all accessories in compliance with the instructions for use. Mount the water tank onto the single-brush machine.
		Fill the water tank with the cleaning product solution in accordance with the dosing instructions.
		Put up the warning sign.
Main task		Remove any loose dirt (dry vacuuming).
		
		Attach a suitable shampoo brush to the LS single-brush machine.
		Set the correct height for the upright handle.
		Switch on the machine. The connection must audibly click into place.
		Use the single-brush machine to work up a lather on a separate piece of carpet.
		Start by using a hand brush to wet shampoo along the edges and underneath furniture.
		Wet shampoo the floor covering. Apply the carpet shampoo solution using the LS single-brush machine and the shampoo brush. Create 2-3 overlapping passes section by section and work them in a circular motion.
		As needed: Evenly straighten the moist carpet pile in overlapping passes using a carpet pile brush.
		Allow the floor covering to dry completely.
Final steps		Brush vacuum the entire dry carpet area and, if needed, straighten the carpet pile using a carpet pile brush.
		Perform a visual check.
		Empty and rinse out the water tank.
Comments		Check the power cable for visible damage, clean the cable and roll it up loosely towards the plug.
		Remove the warning sign once the floor covering is dry.
		Rinse the shampoo brush.
		Dispose of any waste.
		Clean the cleaning equipment and replace as needed.
		<ul style="list-style-type: none"> - Wear the personal protective equipment (PPE) required by company regulations, safety data sheets and / or instructions for use. - Always check in advance which product meets your requirements (see Wetrok Cleaning & Care Instructions). - Wetrok AG accepts no liability for damage caused by improper use or incorrect product selection.